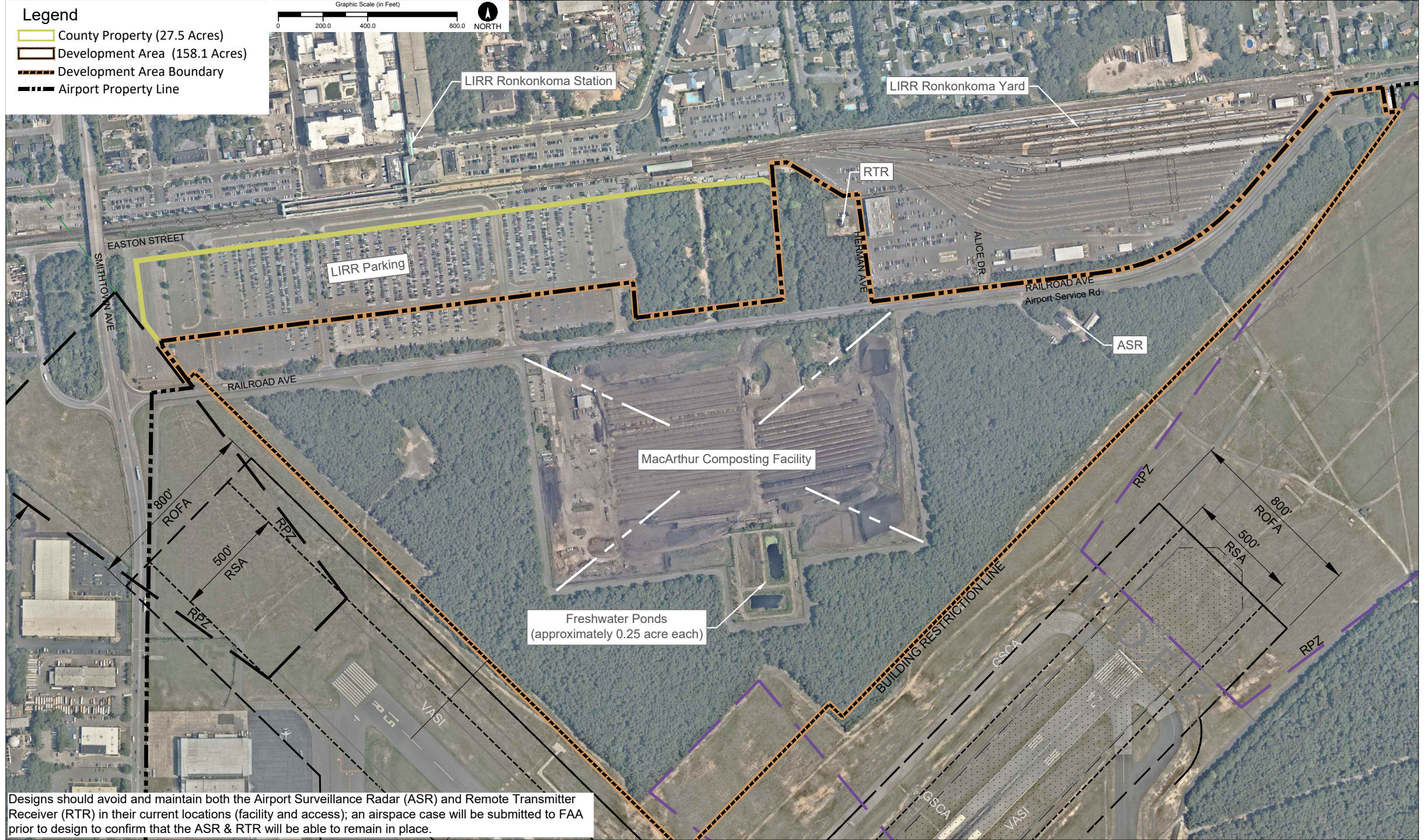




- County Property (27.5 Acres)
- Development Area (158.1 Acres)
- Development Area Boundary
- Airport Property Line



Designs should avoid and maintain both the Airport Surveillance Radar (ASR) and Remote Transmitter Receiver (RTR) in their current locations (facility and access); an airspace case will be submitted to FAA prior to design to confirm that the ASR & RTR will be able to remain in place.